



## Kvadrat Soft Cells Broadline

Soft Cells Broadline panels incorporate acoustic padding behind a textile layer to offer Class-A sound absorption, as per ISO 11654.

### At a glance

The patented aluminium frame has a hidden tensioning mechanism, which ensures that the front textile stays perfectly taut

Thanks to the tensioning mechanism, the textile covering is unaffected by changes in temperature and humidity

Suitable for all kinds of interiors

Easy to mount on walls and ceilings at any angle

Can be manufactured in large sizes

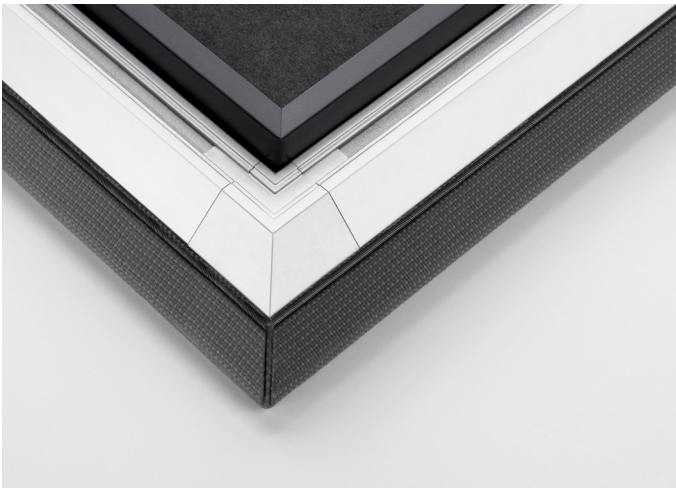
Available in a variety of colors and textile compositions

Can easily be taken down, reused and reupholstered to meet changing requirements. Optimum coverage of the entire frequency range, Class-A sound absorber

Choice of different mounting systems to best meet individual requirements

All Soft Cells systems installed by our Certified White Glove Technicians are covered by a 10 year technical guarantee

The Soft Cells specialists and architectural support work closely with the architects in developing customised solutions



### Technical data

#### Applications

Interior walls and ceilings

#### Structural form

Single-sided, single-layer tensioned textile, with a 40 mm wide acoustic padding core

#### Dimensions

From 200 x 200 mm to 3000 x 6000 mm, depending on choice of textile (textile width – 200 mm = maximum panel width)

#### System depth

Wall mounted version: 55 mm from installation surface  
Ceiling mounted version with magnet: 55 mm from installation surface  
Ceiling mounted version with steel wire: min. 100 mm

#### Frame profile

Aluminium hollow section profile  
Height: 36 mm

#### Frame colour

Silver anodised

## Acoustic performance

The textile chosen, *Time 300*, typifies the performance of most acoustically tested Soft Cells textiles. Acoustic results for specific textiles can be supplied upon request, or downloaded from [www.softcells.com](http://www.softcells.com).

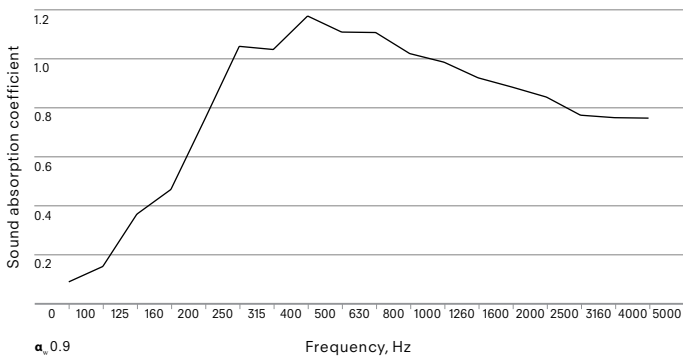


Diagram A: Wall and ceiling absorbers installed with magnets, 55 mm depth

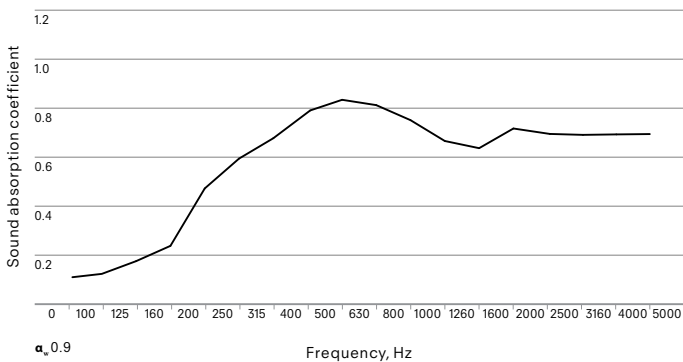


Diagram B: Suspended ceiling absorbers, 200 mm depth

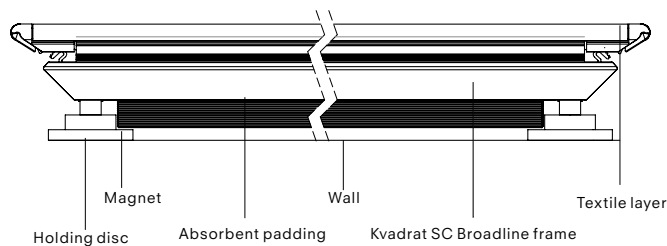


Diagram C: Top view

## Mounting system

Walls: magnets

Ceilings: magnets, steel wires or hinged ceiling solution

## Textile

A standard set of textiles have been tested for sound absorption according to EN ISO 354. Additional textiles can be tested for acoustic performance upon request.

## Acoustic core

Incorporated 3mm behind front textile

Material: acoustic padding, 40mm thick

Rated as a Class A sound absorber, in accordance with DIN EN ISO 11654

## Accessories

### Hinges and magnets

If access is required from above, Soft Cells panels should be mounted with hinges and magnets.

Material: mild steel and die-cast aluminium alloy

Overall depth of the panels from the face of the installation surface: 55 mm

### Magnets

Allow for the dismantling of panels without tools. Suitable for mounting on walls and ceilings.

Material: steel, pot magnet

Overall depth of the panels from the face of the installation surface: 55 mm

### Steel wire

For ceiling mounting where a suspended ceiling is required.

Material: stainless steel wire

Minimum dimension of the front side of the panel to the installation surface: 100 mm

### End caps

For covering the small gap between wall and Soft Cells.

Material: aluminium

Width: 55 mm, length adjusted to length or width of Soft Cells, max. 3000 mm in one piece